



CANADIAN
WIND
ORCHESTRA

MARK HOPKINS & GILLIAN MACKAY
ARTISTIC DIRECTORS

AND

WOODSHED CANADIAN PERCUSSION ENSEMBLE

ANDY MORRIS, ARTISTIC DIRECTOR

2023 PERCUSSION AUDITION INFORMATION


The Woodshed Percussion Ensemble is the percussion section for the Denis Wick Canadian Wind Orchestra, and use an integrated schedule. Your audition will be used to determine acceptance into **both groups**. Please record a video file (mp4, wav, or another standard video file format) and upload it to your account at the MusicFest website, with **all four parts** as listed below. When a tempo range is suggested, accuracy and clarity are more important than speed.

PLEASE NOTE -If you are having difficulty accessing any instrument(s), please send an email to Dr. Mark Hopkins (mark.hopkins@acadiau.ca) outlining your challenges. We will work together to find a solution!

PART #1 KEYBOARD Mallet INSTRUMENTS

Please play these two scales as specified:

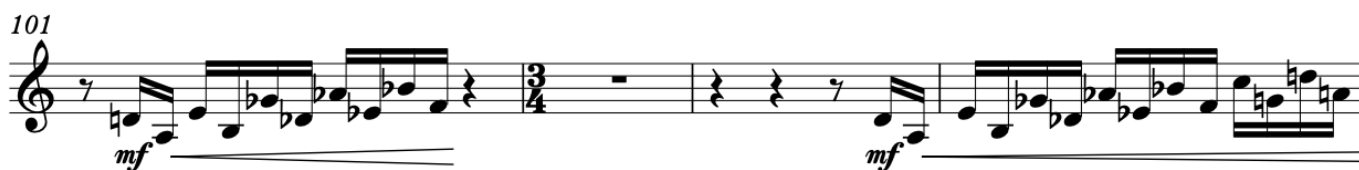
- (a) Any chromatic scale starting on any note, all slurred (at least 2 octaves, alternate sticking)
- (b) G major concert scale, one octave, using a slur-2/staccato-2 pattern

, with arpeggios, played quickly but also in full control

- (c) **THIS EXCERPT FROM SALLY LAMB McCUNE *HIGH WATER RISING***

quarter = 92-116 bpm

3



PART #2 SNARE DRUM EXCERPT, SALLY LAMB McCUNE *HIGH WATER RISING*

quarter = 92-116 bpm

m

snare
drum

mf *mf* *mf*

92 

97 

PART #3 TIMPANI EXCERPT, SALLY LAMB McCUNE *HIGH WATER RISING*

G ♩ = 116 a tempo
Tuning at start of G: E \flat 2/A \flat 2/D \flat 3/G3/B \flat 3

137

146

149

153

D \flat 3 to D \sharp 3 ♩ = 87

PART #4 OWN-CHOICE PLAYING SAMPLE

Please play 45 seconds to one minute **only** of any solo, etude, or excerpt on the classical percussion instrument that you feel you play the best. Please count any rests shorter than 2 measures; otherwise, skip ahead to your next entrance after counting a measure or two, always staying in time.